



SERVICE INFO

Alberta Rewind's 15,000 square foot South Edmonton facility offers everything required to rewind and repair all types of electric motors, pumps and generators. Equipped with a 22,000lb capacity overhead crane, temperature controlled burn out oven, electronic balancing equipment, complete testing capabilities and VPI dip tanks our service shop is capable of handling most motor, pump and generator repairs. Our knowledgeable staff have extensive knowledge of the industry and are here to help. We also have fully stocked service vehicles equipped to provide a large number of services on-site.

Generator & Motor repairs up to 10,000HP

- AC & DC
- Single & Three Phase
- Explosion Proof
- Traction Motors
- Stator & Armature Rewinds
- Crane & Hoist Motors
- Dragline / Shovel Motor Overhauls
- Generator Overhauls
- Hubner Encoder Diagnostic Testing
- PDMA Testing

Complete Pump Repairs

- Submersible Pumps
 - » Sewage
 - » Effluent
 - » Well Pumps
 - » Sump Pumps
- Circulating Pumps
- Condensate Pumps
- Gear Pumps
- Vacuum Pumps
- Vertical Turbine Pumps
- Pump Conversions
- Mud Pumps
- Air Pumps
- Bitumen Pumps

Machine Shop Services

- Dynamic Balancing
- Fabricate & Repair Shafts
- Custom Fabricating
- Spray Weld & Chrome Shaft Refurbishing

Fans & Blowers

- Dynamic Balancing
- Laser Alignments
- Installation & Removal
- Bearing & Shaft Replacement
- Cooling Towers

Field Services

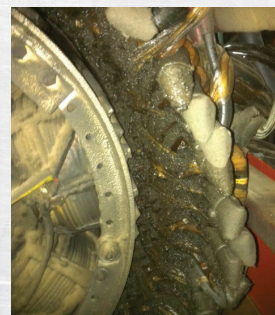
Our fully equipped service vehicles, which service all of Western Canada and the North West Territories, are capable of performing the following services on-site:

- Dry Ice Blasting
- Winding Analysis
- Vibration Analysis
- Trending & Troubleshooting
- Balancing
- Repairs
- Laser Alignment
- Installation & Removal
- Preventative Maintenance Programs
- Encoder Testing – Onsite & Inshop

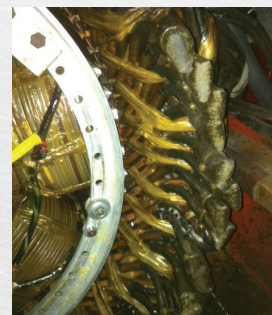
Dry Ice Blasting

Dry ice blasting is an eco-friendly cleaning system utilizing compressed air and CO2 pellets. The pellets evaporate on contact leaving no secondary residue. This cost-effective cleaning method can be used on a wide variety of equipment and results in considerably less down time.

The following two pictures are an illustration of dry-ice blasting work done on a generator.



BEFORE



AFTER

PRODUCT INFO

Alberta Rewind & Pump Services, Ltd. is a supplier of a wide range of electric motors, pumps, fans and generators. We also supply VFDs, replacement bearings, controls, impellers, seals, gaskets and shafts, and any other replacement parts to repair your electric motors and pumps.

Motors:

- AC & DC
- Single & Three Phase
- Explosion Proof
- Traction Motors
- Crane & Hoist Motors
- Dragline/Shovel Motors
- Generators

Authorized Sales & Warranty* for:

- WEG*
- Baldor*
- Marathon*
- Toshiba*
- Leeson*
- Siemens*
- Teco Westinghouse
- U.S. Electric
- Brook Hanson
- Hyundai
- Lincoln
- G.E.
- Reliance

Pumps:

- Submersible Pumps
 - » Sewage
 - » Effluent
 - » Well Pumps
 - » Sump Pumps
- Circulating Pumps
- Condensate Pumps
- Gear Pumps
- Vacuum Pumps
- Vertical Turbine Pumps
- Pump Conversions
- Mud Pumps
- Air Pumps

Authorized Sales & Warranty* for:

- Bell & Gossett*
- Taco*
- Grudfos*
- Leitch*
- Taco/Leitch*
- ITT Domestic*
- Barnes*
- Armstrong
- ITT Flygt
- Monarch
- Weinman
- G & L Goulds
- Gorman Rupp
- Crane Deming
- Prosser
- Burks

COMPANY INFO

Alberta Rewind & Pump Services, Ltd. is a family owned and operated business located in Edmonton, Alberta, serving industries in Western Canada and NWT since 1976.

Our 15,000 square foot service center includes a 22,000lb capacity overhead crane, temperature controlled burn out oven, electronic balancing equipment, complete testing capabilities and a VPI dip tank. Our experienced and knowledgeable staff are available 24 hours a day and specialize in the sales and service of all types of electric motors, pumps, and generators. Services can be done both in-house and in the field.

- Complete In-House Overhauls and Repair of AC & DC Motors up to 10,000HP and Generators up to 3MW
- Pump Repair & Pump Package Sales
- Dynamic Balancing
- Vibration Analysis (Preventative Maintenance)
- Winding Analysis
- Dry Ice Blasting
- Laser Alignment
- Custom Fabrication
- Shaft Repair & Fabrication
- Spray Weld & Chrome Shaft Refurbishing



Alberta Rewind & Pump Services, Ltd.

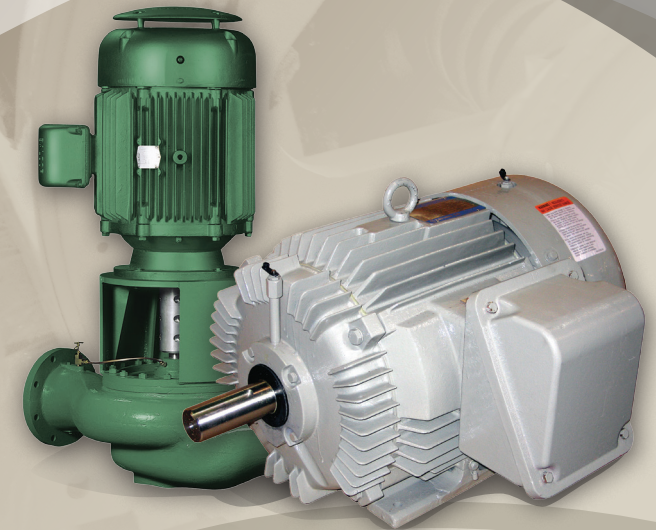
8435 McIntyre Road
Edmonton, AB T6E 6G3

TEL: 780-468-7175

FAX: 780-468-7177

EMAIL: info@albertarewind.ca

WWW.ALBERTAREWIND.CA



EXPERT SALES SUPERIOR SERVICE

Electric Motors, Pumps & Generators